

CAN WE FIX IT?

SEBASTIUS, HACKER HOTEL 2016

About me

- * Sebastian Oort
- * Teacher by day
- * Self taught hacker/fixer
- * Love retro-hardware





PROJECT

CAN WE FIX IT?

4 PRACTICAL REPAIRS FOR EVERYONE

DATUM

APRIL 2, 2016

KLANT

HACKER HOTEL

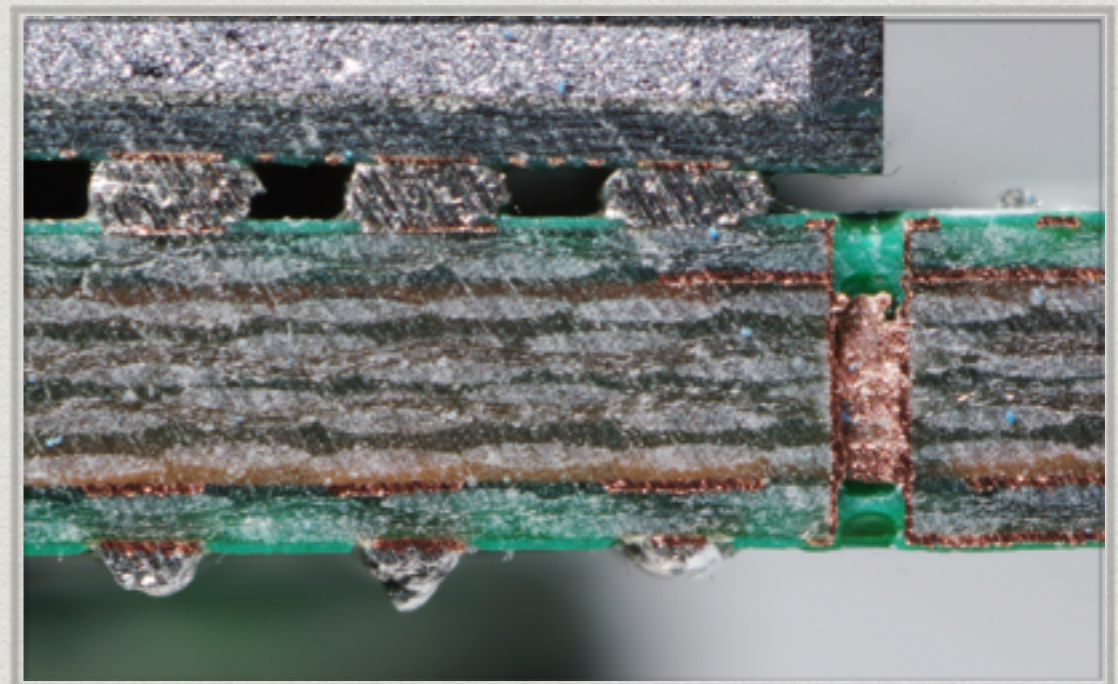
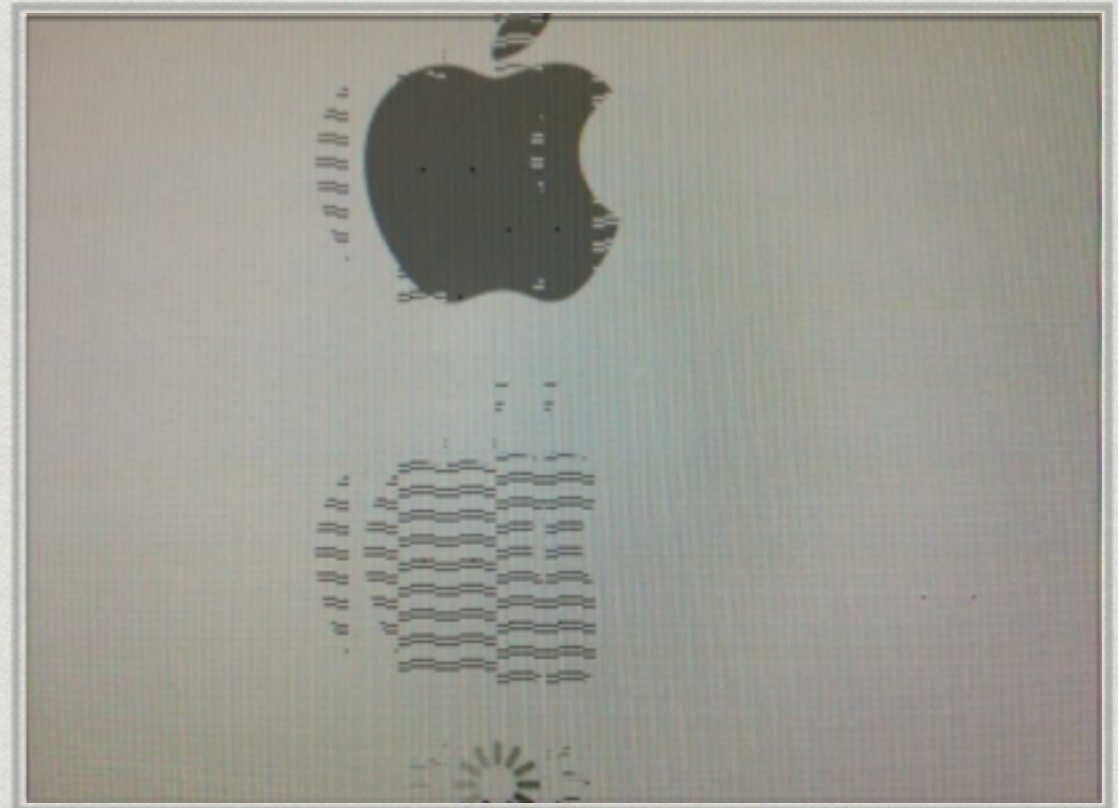
REFLOW

BAKE COOKIES AND BGA'S



Why do we reflow?

- * Bad GPU's and other chips
 - * Board connection
 - * Die-carrier connection
- * Relatively easy replace QFN packages and other SMT stuff





TOOLS REQUIRED AND RECOMMENDED



MY SETUP BEFORE I BOUGHT A PREHEATER

Reflow profile

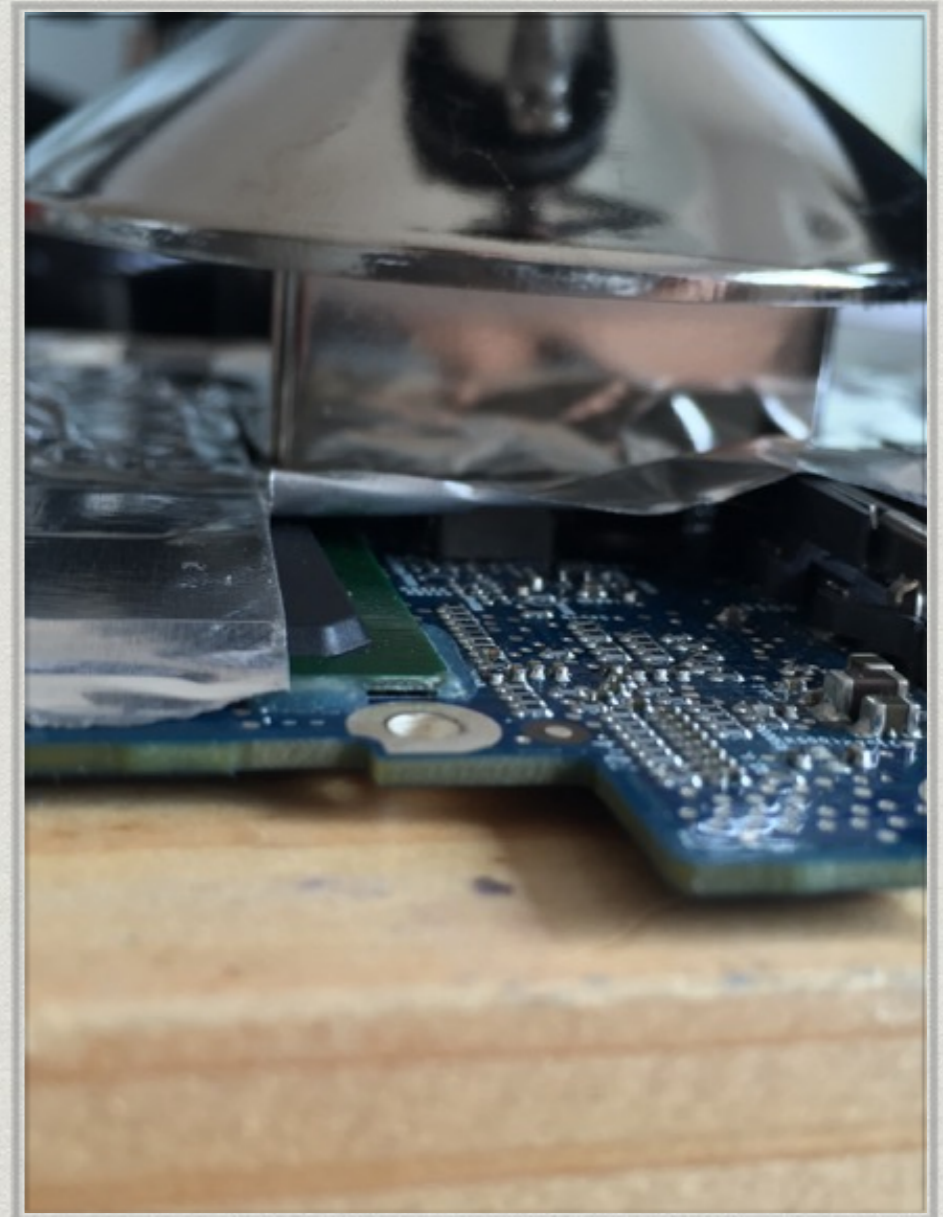
- * Preheat at 150°C for 3 mins
- * Soak at 230 for 1.5 mins
- * Peak at 350 for 45 secs
- * Soak at 230 for 1.5 mins
- * Cool at 150 for 3 mins
- * Cooldown for at least 15 minutes!

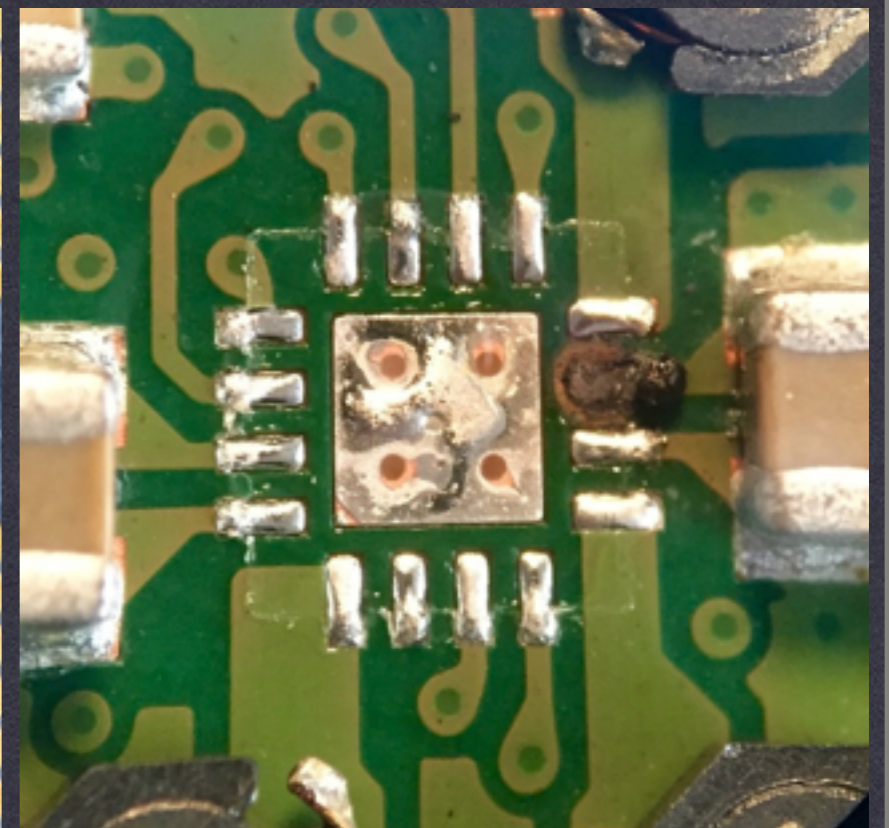
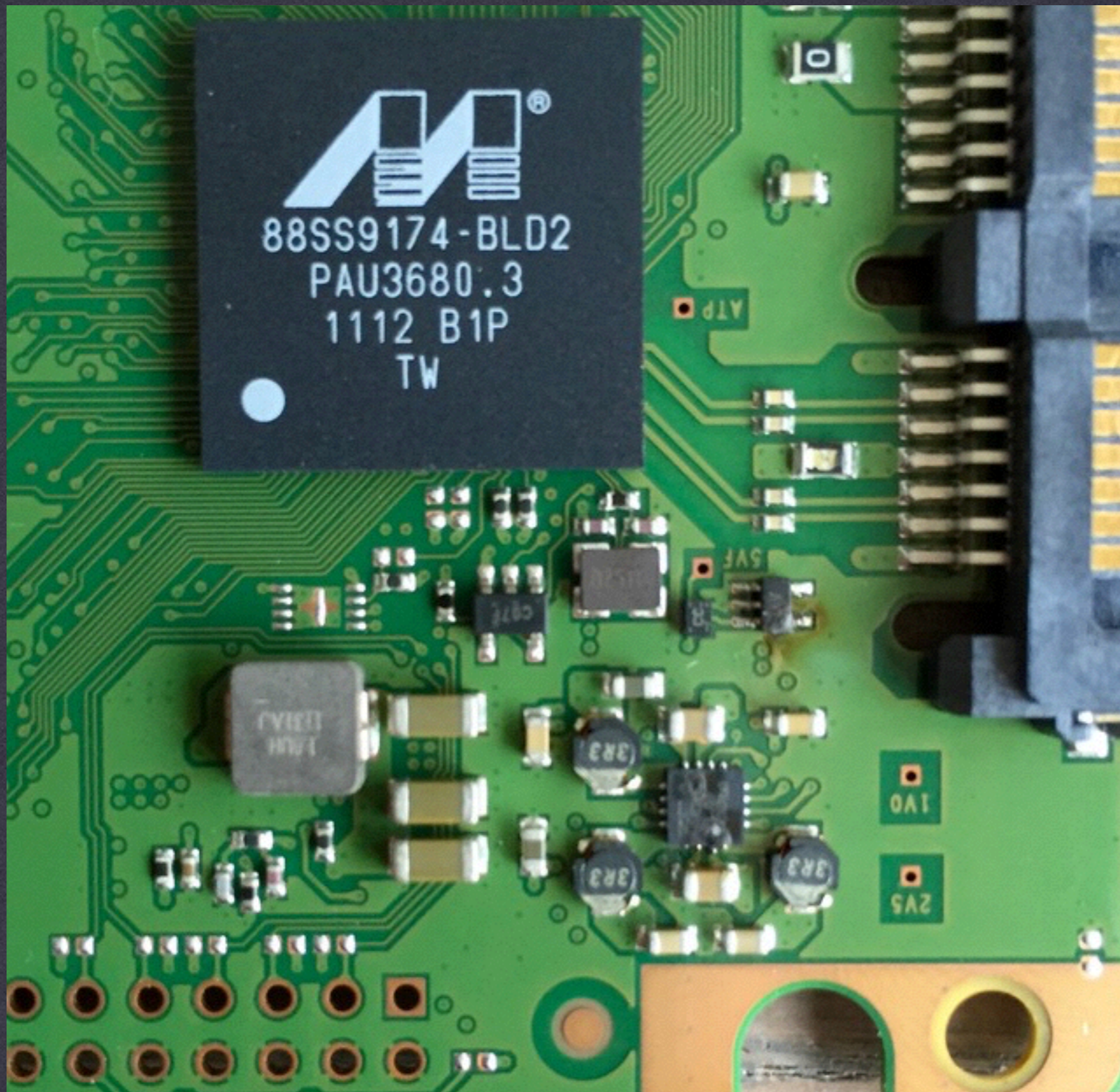


Ikea FORSÅ (seriously!)

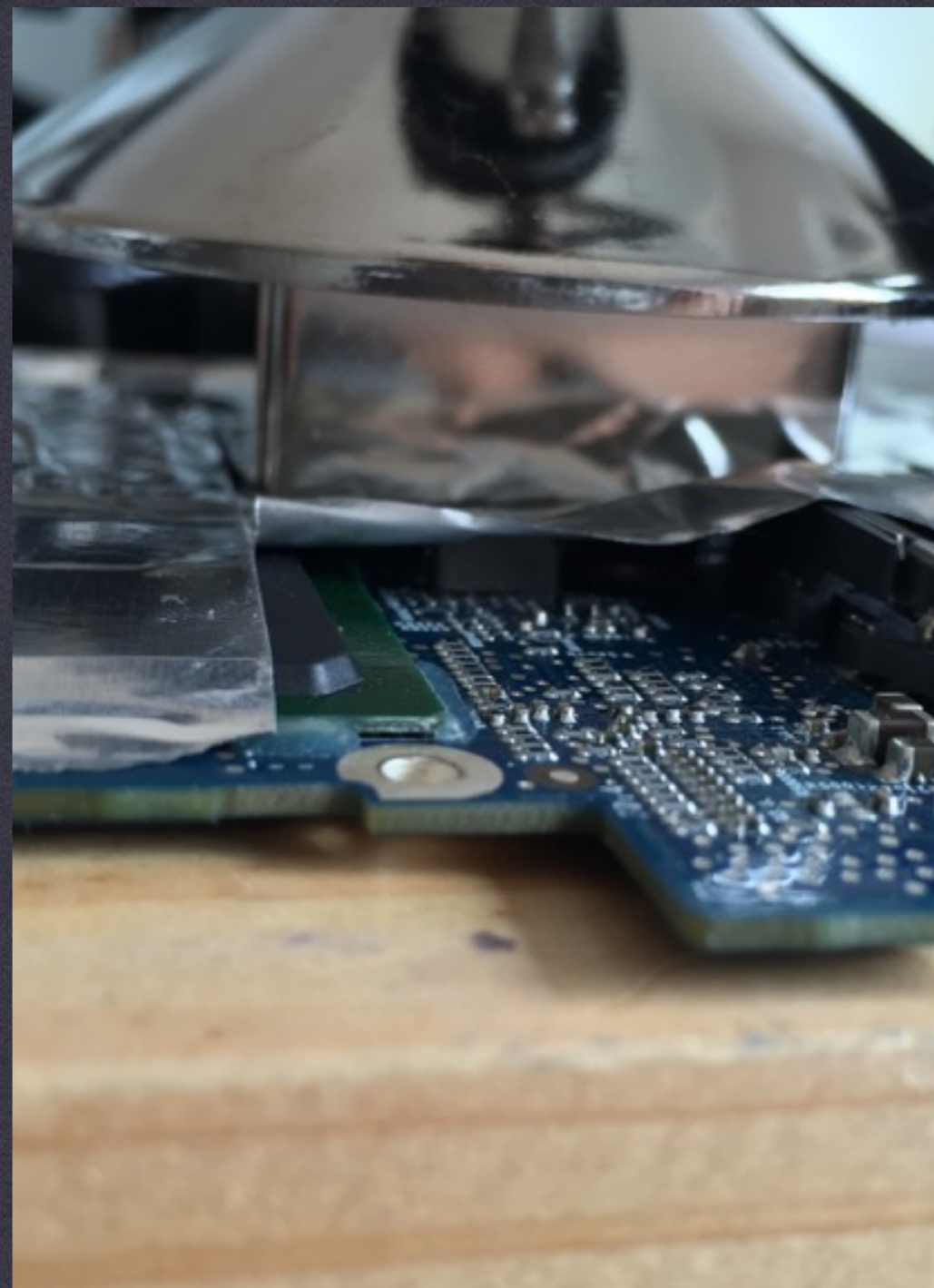
Top Tips

- * Aluminium and Kapton tape are your friends
- * Flux should be your BFF
- * Reflow profile is up for experimentation
- * Stuff is hot!





A BIT MORE ADVANCED HOT AIR REWORK



PROJECT

CAN WE FIX IT?

6 PRACTICAL REPAIRS FOR EVERYONE

DATUM

APRIL 2, 2016

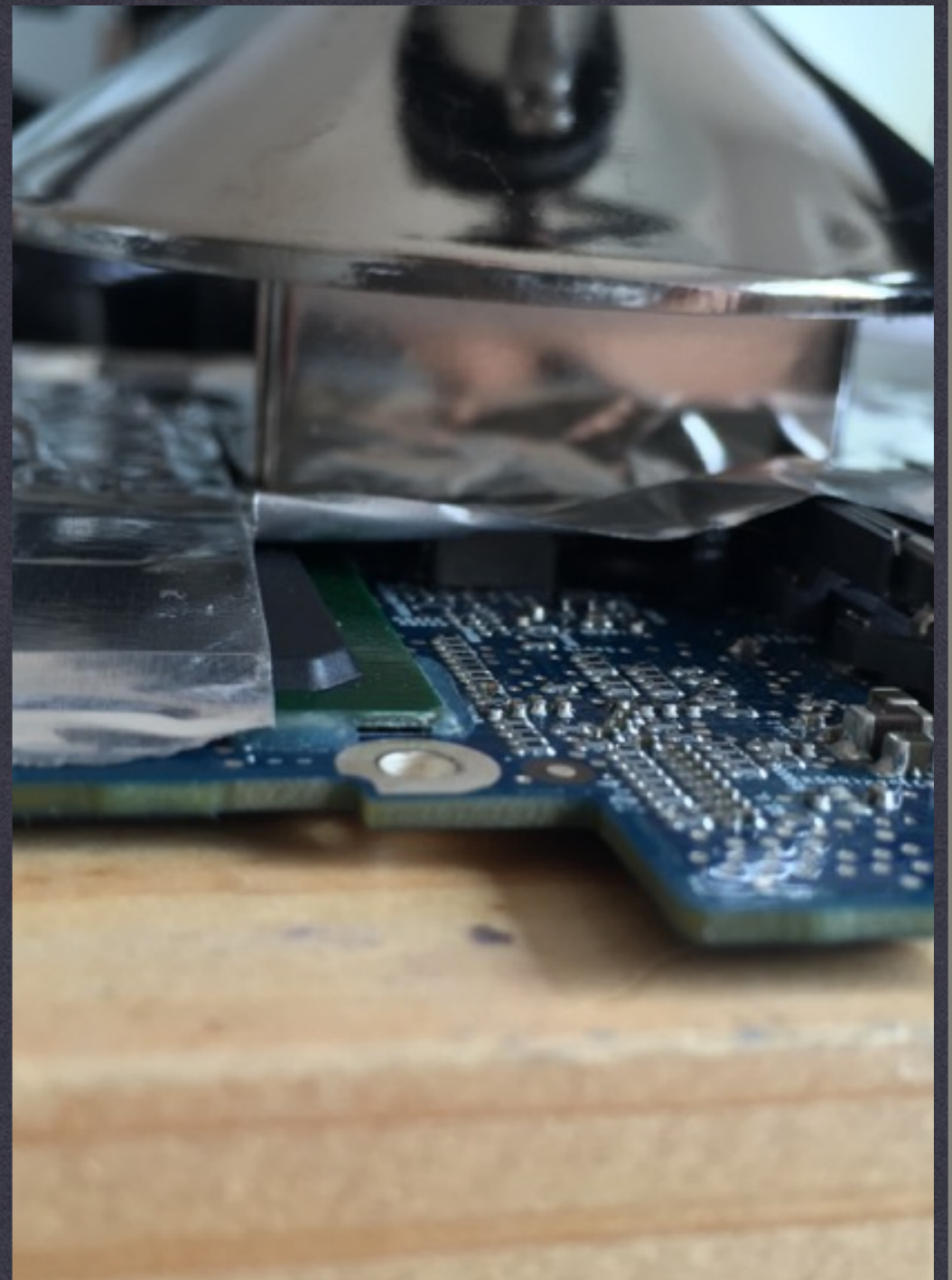
KLANT

HACKER HOTEL

DEAD DATA

QUICK HARDDRIVE FIX





PROJECT

CAN WE FIX IT?

6 PRACTICAL REPAIRS FOR EVERYONE

DATUM

APRIL 2, 2016

KLANT

HACKER HOTEL

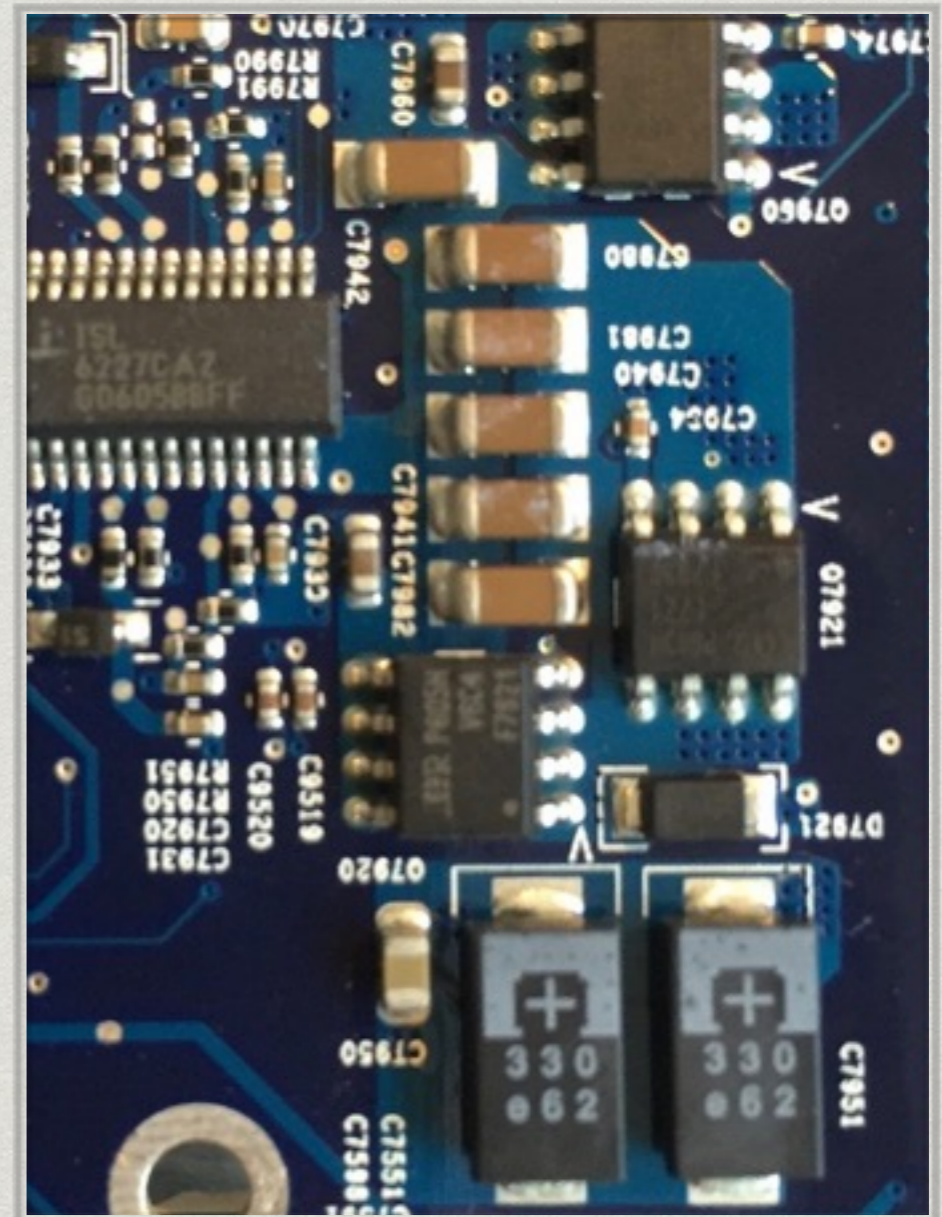
CAPACITORS

BOOM!



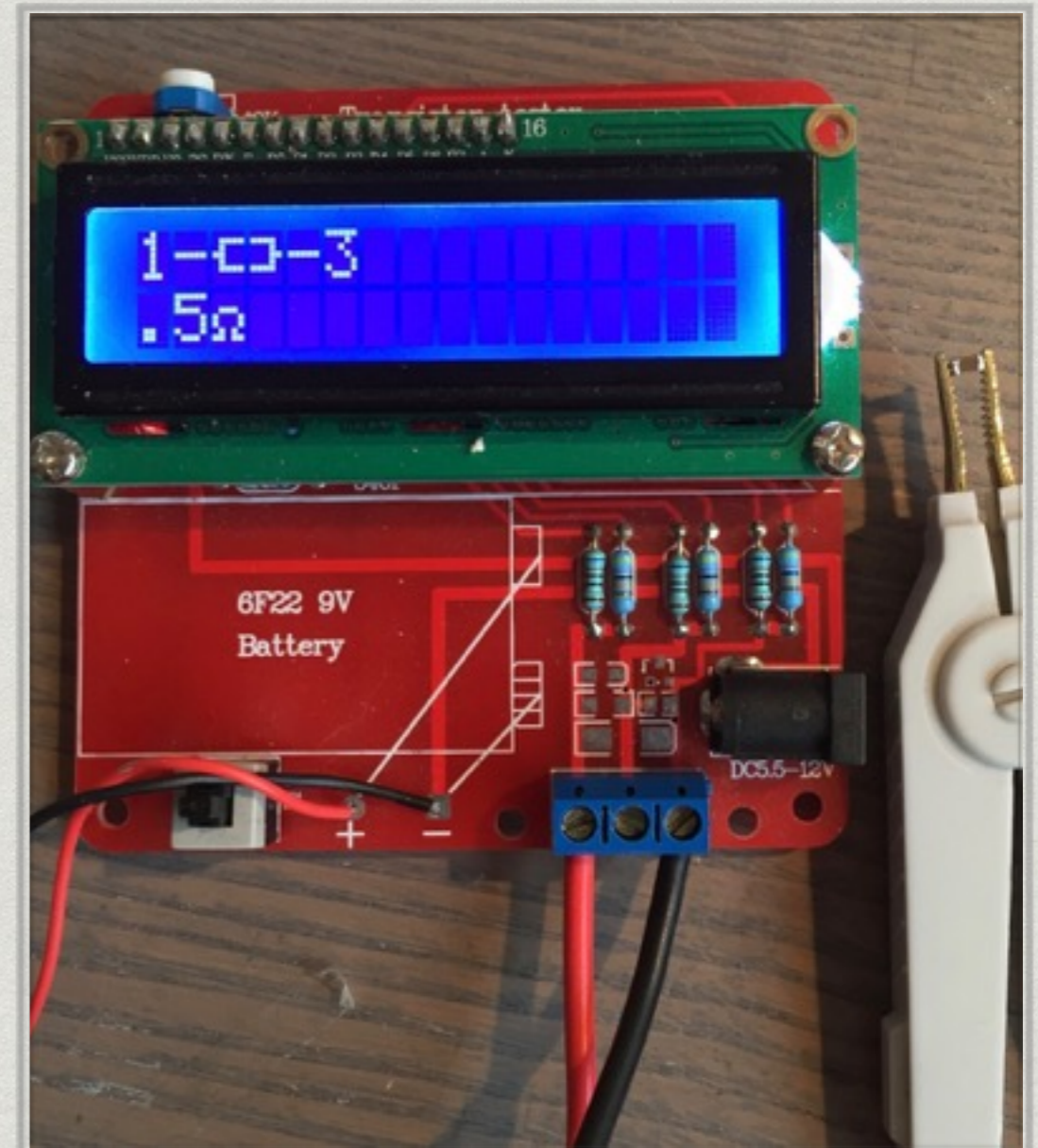
Symptoms

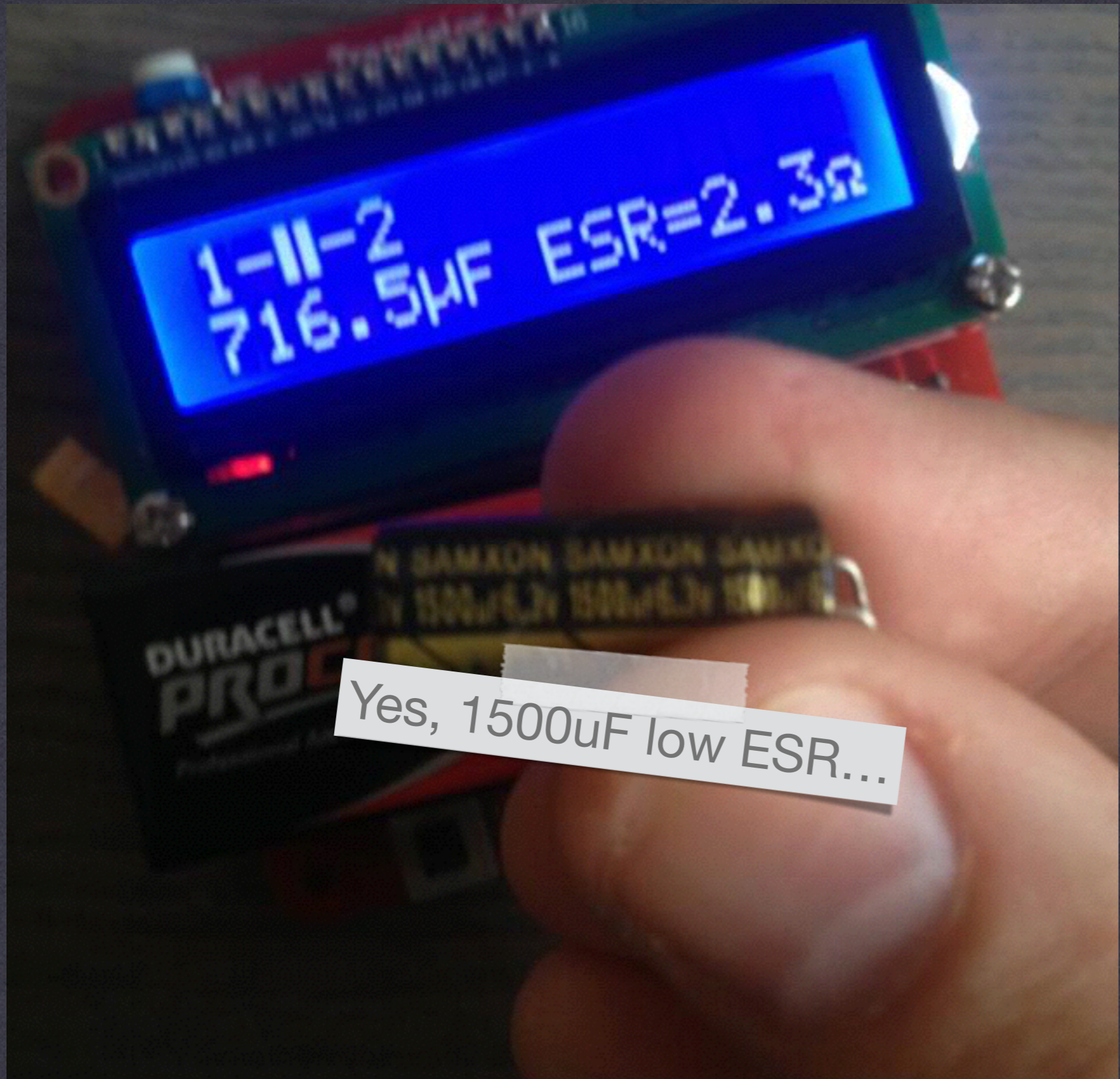
- * PSU not starting or just weird
- * Bulging or leaking capacitors
- * Power rails on board shorted or not up to standard
- * AD-Conversion offset



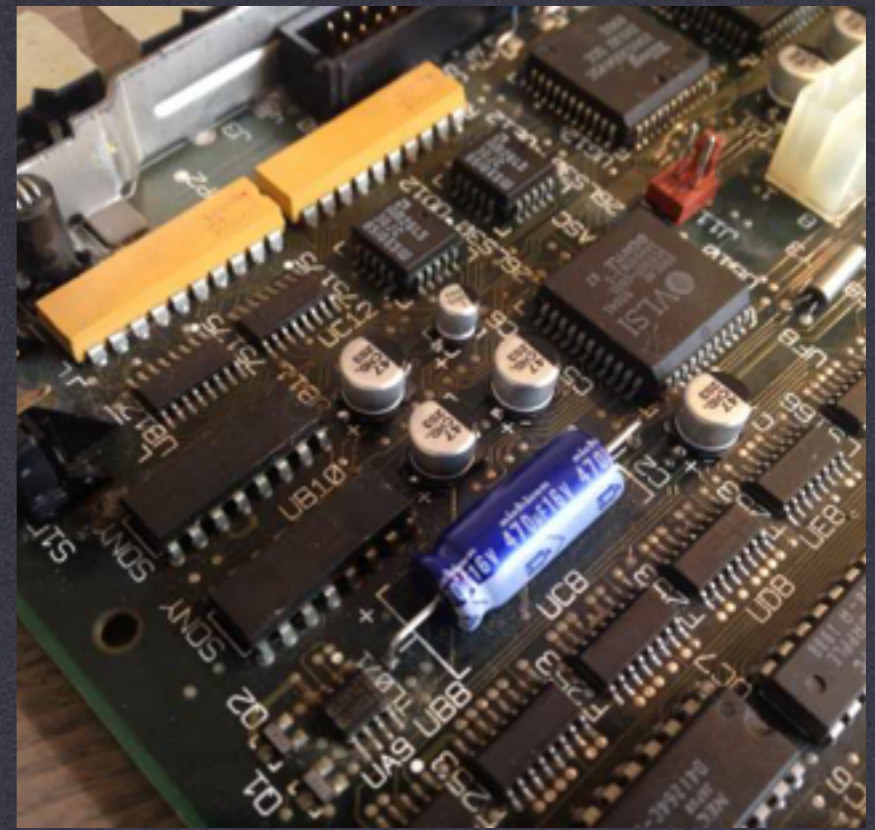
Get this kit

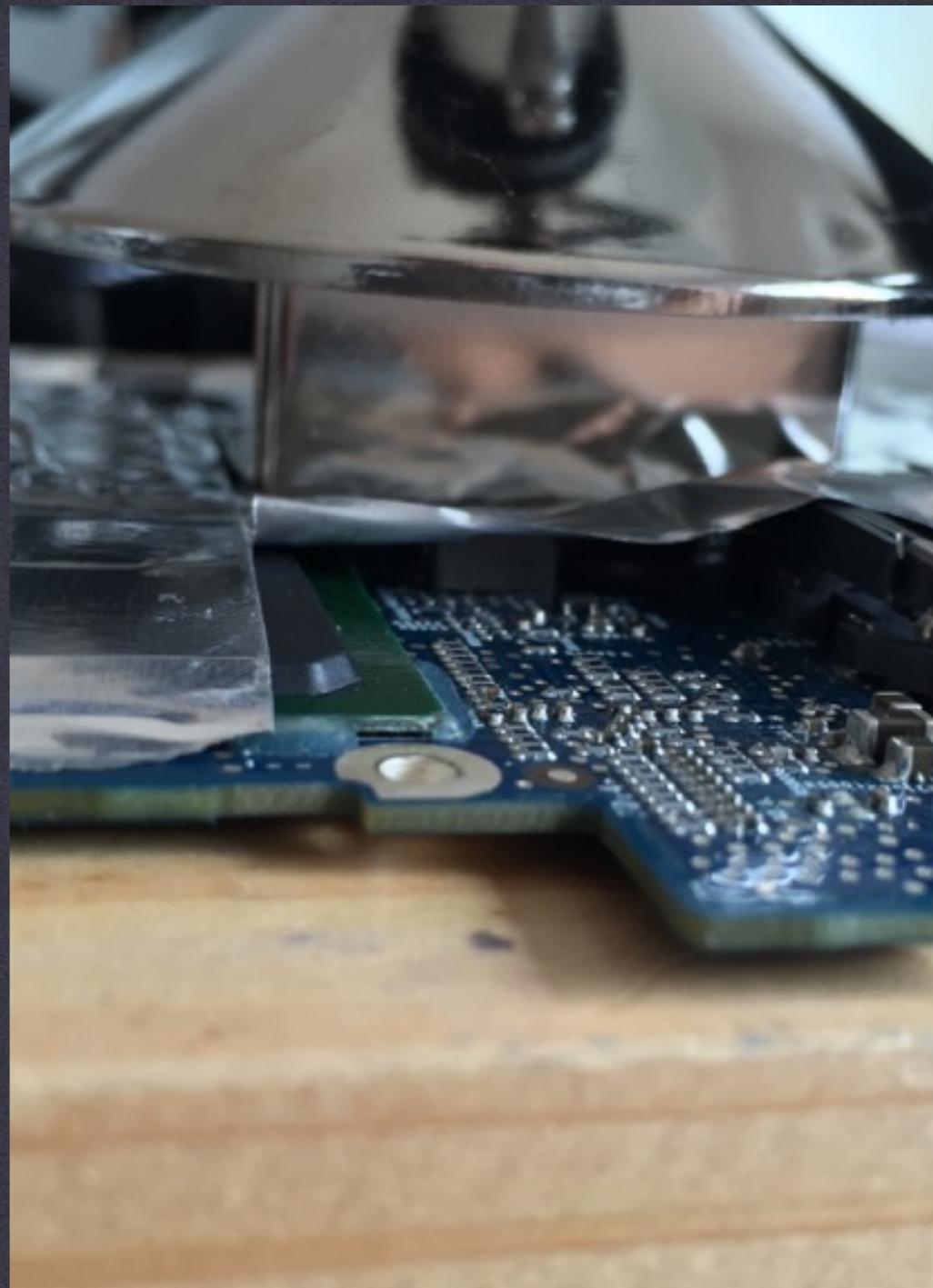
- * ESR/Transistor Tester
 - * Resistors
 - * Capacitors
 - * Coils
 - * Transistors
 - * Diodes/LEDs
 - * FETs and more!
- * About € 12,- on Ebay/AliExpress
- * Open Source HW/SW!





Yes, 1500uF low ESR...





PROJECT

CAN WE FIX IT?

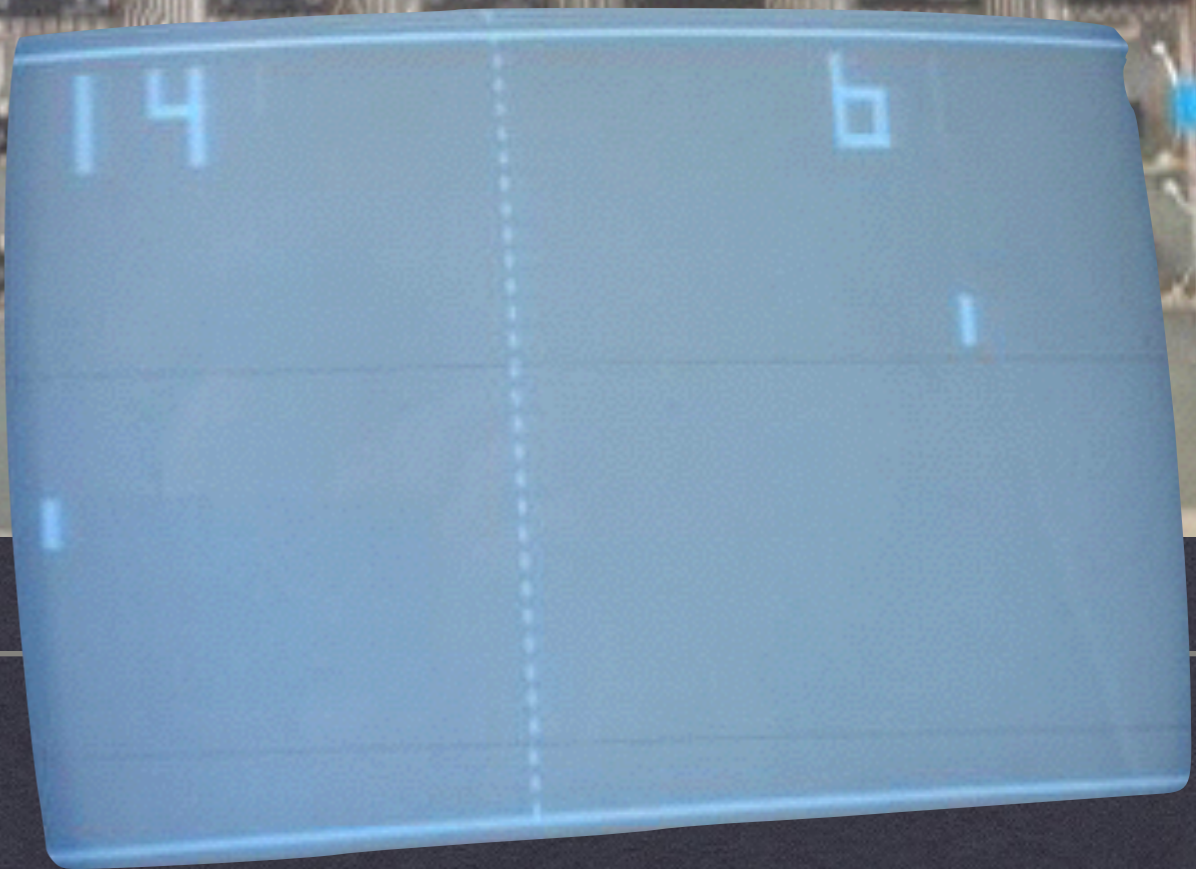
4 PRACTICAL REPAIRS FOR EVERYONE

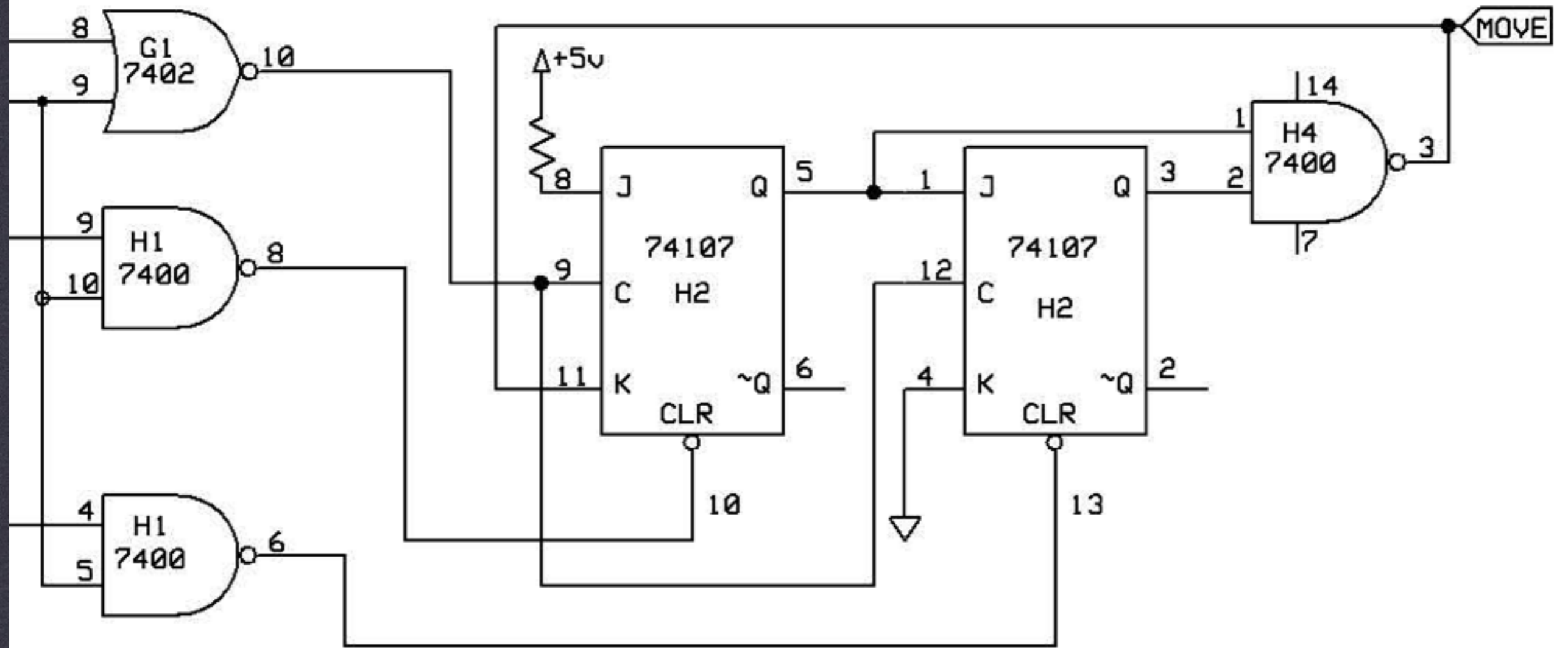
DATUM

APRIL 2, 2016

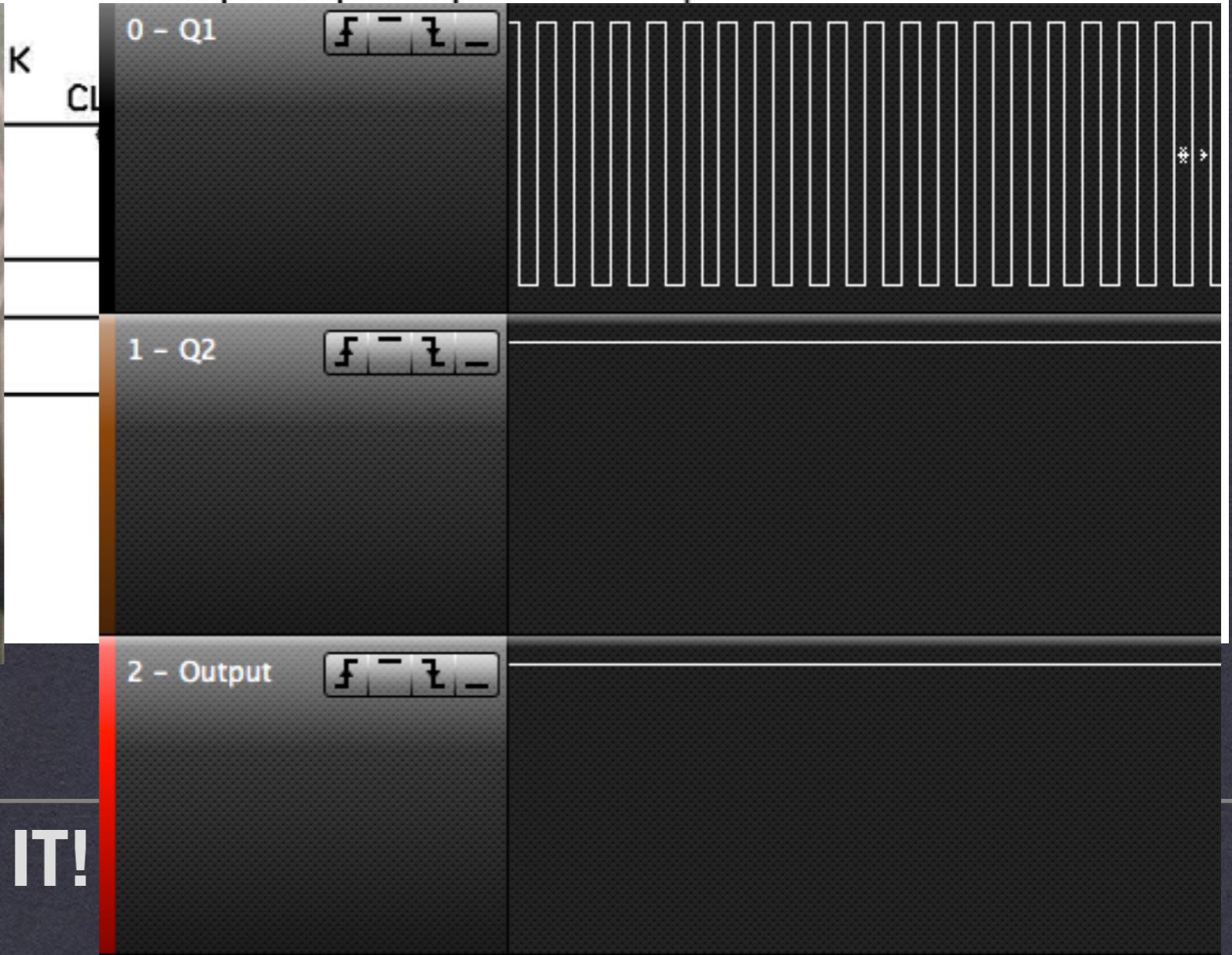
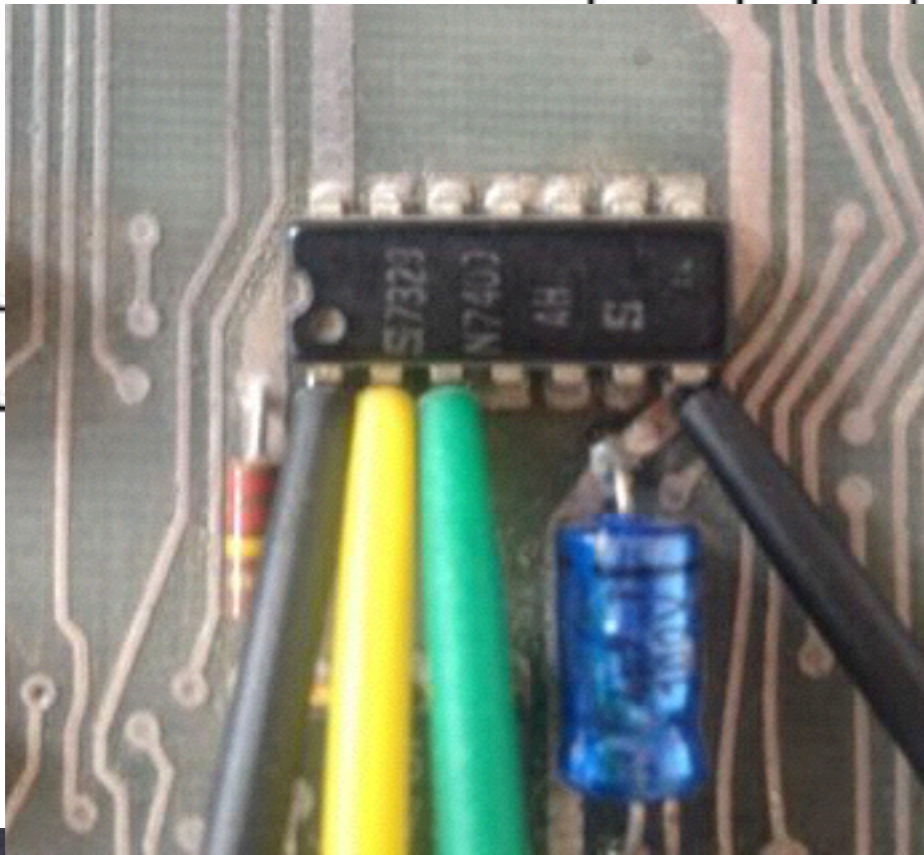
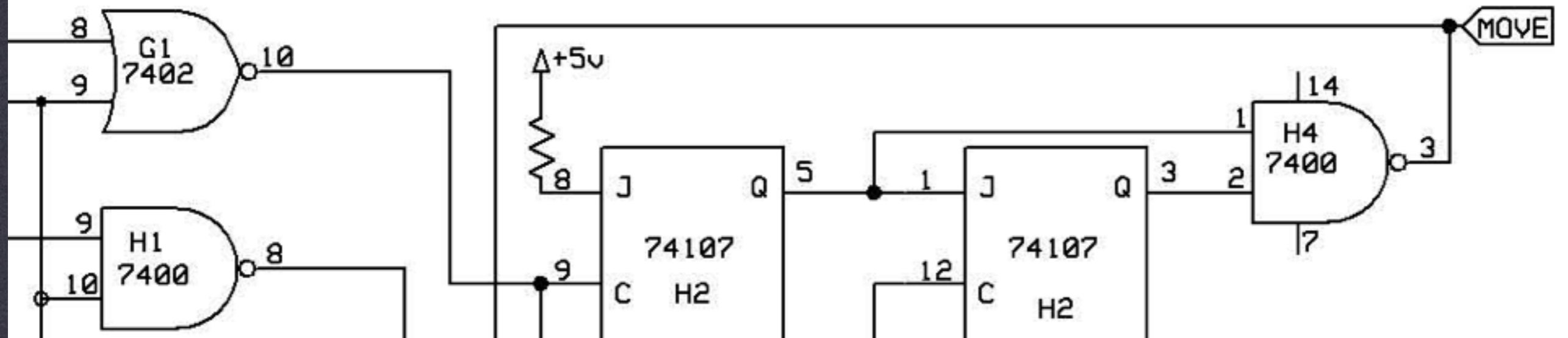
KLANT

HACKER HOTEL

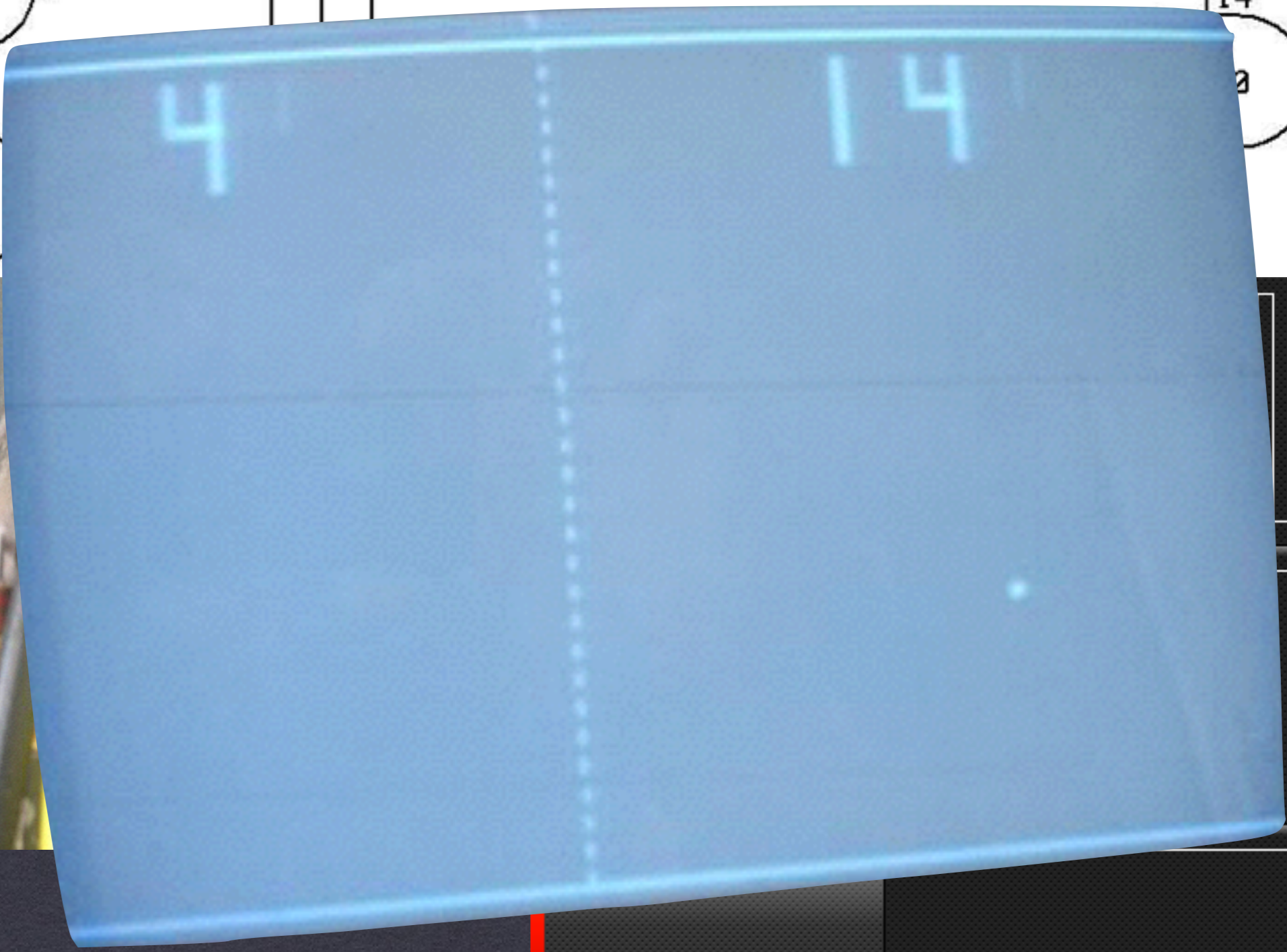




I LIKE TO MOVE IT, MOVE IT!



I LIKE TO MOVE IT, MOVE IT!



I LIKE TO MOVE IT, MOVE IT!

Closing thoughts

- * Most repairs i do are mechanical in nature and are really easy
- * Even complex problems can always be traced back to a root cause
- * The older, the more difficult to diagnose but also the easier to repair.

